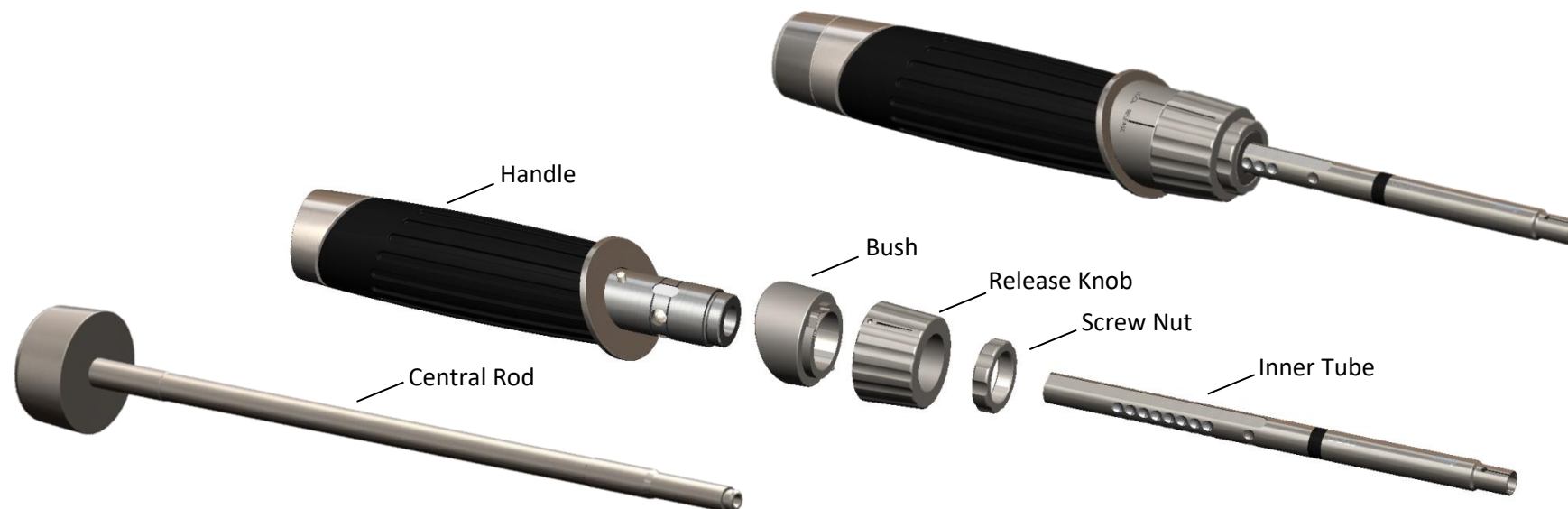


(Dis)assembly instruction for the GANNET® Introducer



Assembly

1. Place the Bush on the Handle
2. Place the Release Knob with indicator aligned to the release indicator on the Bush
3. Tighten the Nut
4. Place the Inner Tube. Align the slot of the Inner Tube with the lock indicator on the Bush.
5. Place the Central Rod in the tray separately

Disassembly

1. Take the Central Rod out of the Introducer
2. Remove the Inner Tube, make sure the indicator on the Release Knob is aligned with Release.
3. Untighten the Screw Nut.
4. Remove the Release Knob.
5. Remove the Bush